



## TMO TEMPERATURE MONITOR ONLY

The TMO shall incorporate a digital display with readout of room temperature and/or discharge air temperature. The temperature monitor shall be low voltage (24-30VAC), solid state. A common wire is required. No clock, programming or batteries are required. No special wiring shall be required for typical single transformer installations.

The temperature monitor can be pre-mounted and factory wired on a lighting control cabinet, or mounted independently, using a 24VAC transformer, and will utilize the Remote Room Sensor (TME-RRS) and/or Supply Air Sensor (TME-SAS.)

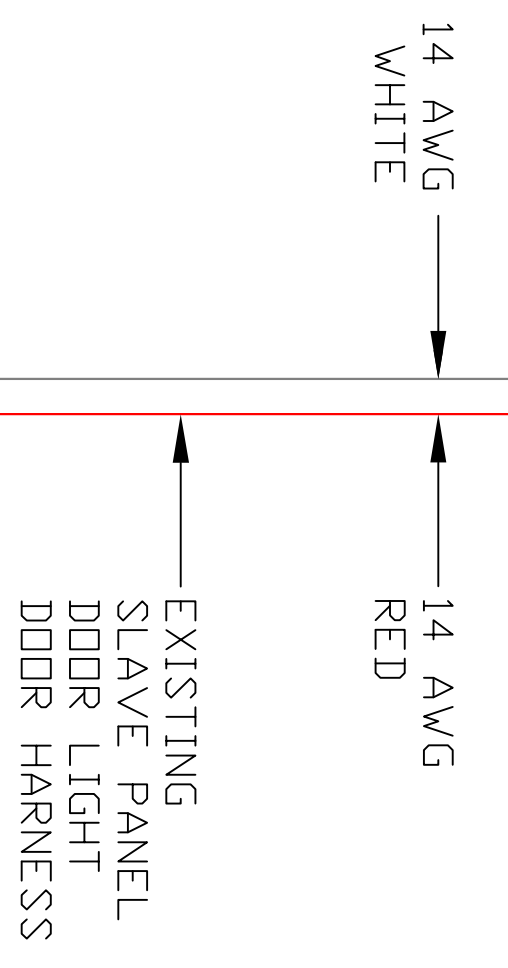
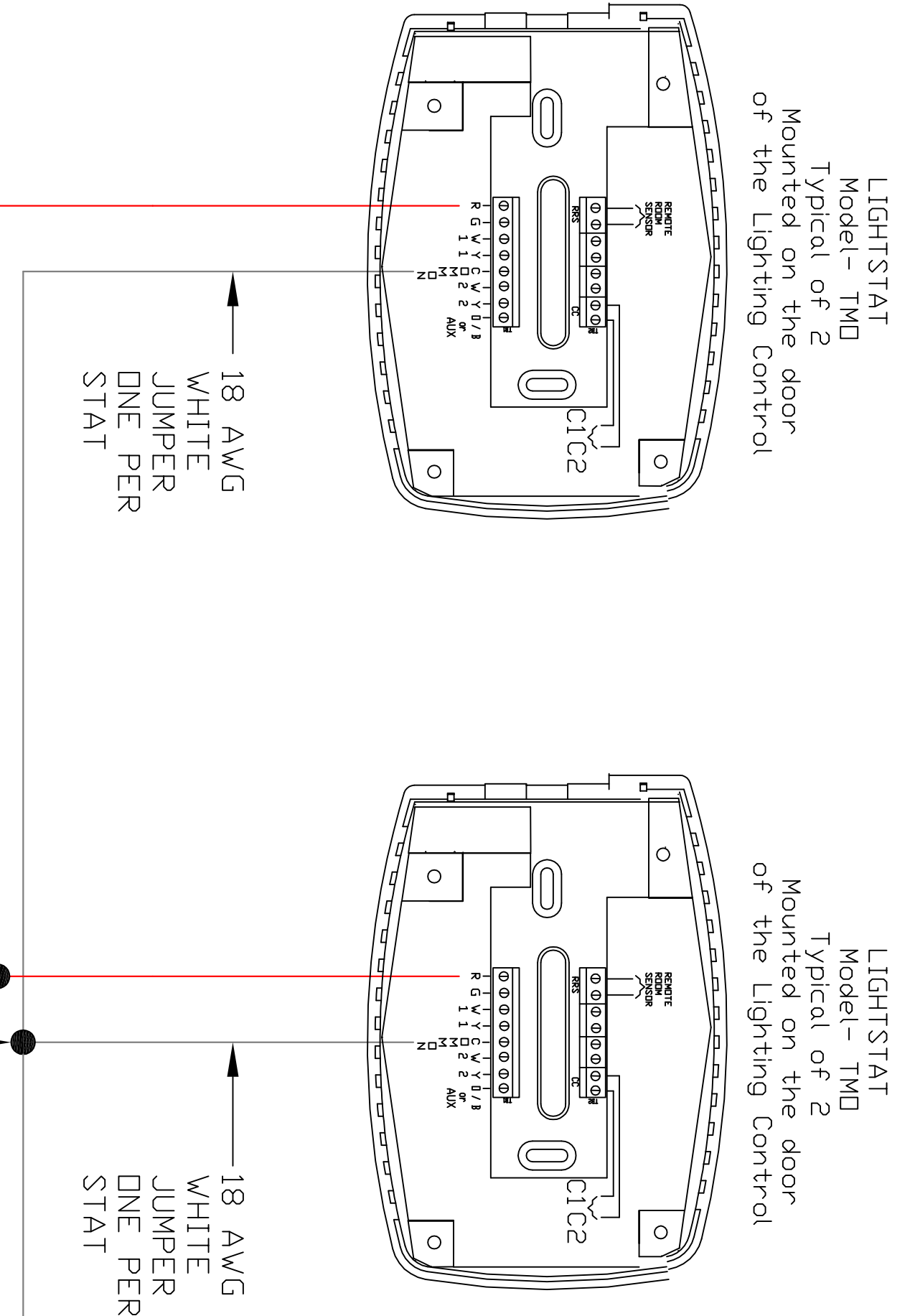
### This Model shall be:

### TMO

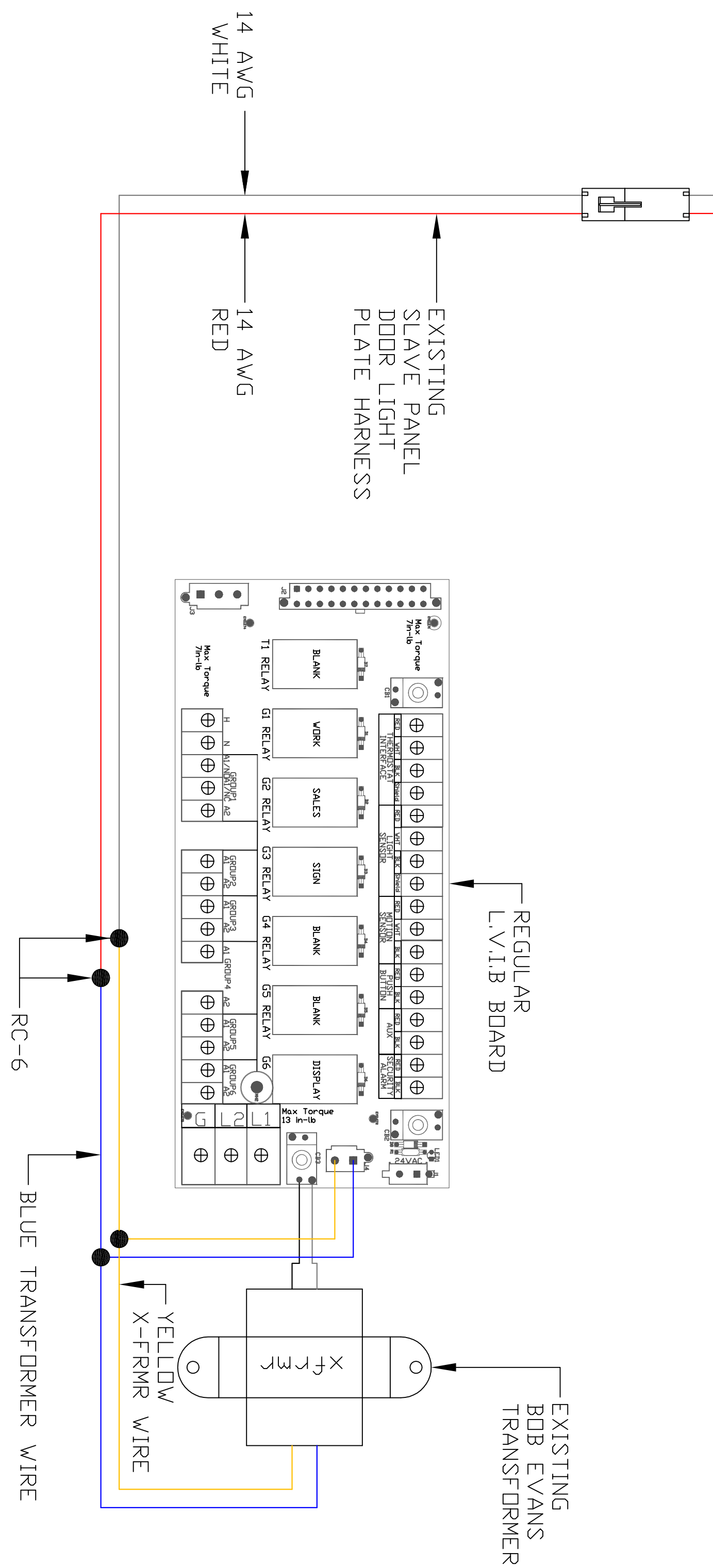
Construction.....	Electronic (solid state)	Temp Range Display.....	0° to 99° F
Electrical.....	24-30VAC	Setbacks*.....	N/A
Switching Current.....	N/A	Operating Temperature Differential.....	N/A
Function Buttons.....	System: ON/OFF	First to Second Stage Differential.....	N/A
	Display: Supply Air	Heating-Cooling Deadband.....	N/A
Temperature Limits*.....	N/A	Dimensions.....	6.0"W x 4.25"H x 1.5"D
Mounting.....	Fits standard, horizontal, single gang electrical box		

\*Factory set and cannot be field adjusted

Lightstat Inc.  
22 W West Hill Road Barkhamsted, CT  
06063 P: 800-292-2444 F: 860-738-4123  
[www.lightstat.com](http://www.lightstat.com)



WIRE THE BLUE TRANSFORMER WIRE TO THE RED WIRE OF THE SLAVE PANEL DOOR LIGHT PLATE HARNESS  
 WIRE THE YELLOW TRANSFORMER WIRE TO THE WHITE WIRE OF THE SLAVE PANEL DOOR LIGHT PLATE HARNESS



No.	Revision/Issue	Date

Firm Name and Address  
**LIGHTSTAT INC.**  
 22 W. WEST HILL ROAD  
 BARKHAMSTED, CT. 06063  
 800-292-2444

Project Name and Address  
**TMD WIRING DIAGRAM**

Project	Sheet
Date 11-10-11	
Scale	