

Lightstat Installation and Operation Manual

TG Series Thermostats for Heat/Cool Applications

24 Volt A.C. Power Robbing, Temperature Limiting Thermostat with
Optional Automatic Temperature Setback
No Common Wire Needed.

Read instructions carefully before attempting to install, operate or service the Lightstat electronic setback thermostat. Failure to comply with instructions could result in personal injury and/or property damage. Retain instructions for future reference.

Description

The Lightstat thermostat saves energy and operating costs by using Owner specified factory limited temperature ranges which prevent excessive use of heating or cooling equipment. These limits cannot be changed by the user. The unit requires no batteries and no programming or reset in the event of a power failure. Optionally, the Lightstat thermostat can set back the temperature based on light level in the space. A dark space is considered unoccupied and will turn the heating and cooling setpoints back for better savings.

Thermostats described are available in Heat/Cool (TGHC) and Heat Pump (TGHP) models.



Specifications

Construction.....Electronic (solid state)
Electrical Requirements.....24-30 VAC
Anti-Cycle Time Delay.....45 seconds ON and OFF
Switching Current.....0.2 to 1.0 AMP (max) per output
Heating Temperature control range (typical).....55°F to 78°F (on models with heating)
Cooling Temperature control range (typical).....85°F to 70°F (on models with cooling)
Operating temperature differential minimum 0.5°F
Dimensions 3.6"W x 5.0"H x 1.3"D
Weight 8.0 oz
Function switches: Cool/Off/Heat & Fan On/Auto

Warning:

Read these instructions carefully! Failure to follow them could cause damage to the product or cause a hazardous condition.

General Safety Information:

Do not use this product on circuits exceeding 30 VAC. Higher voltage will damage this control and could cause electrical shock or personal injury.

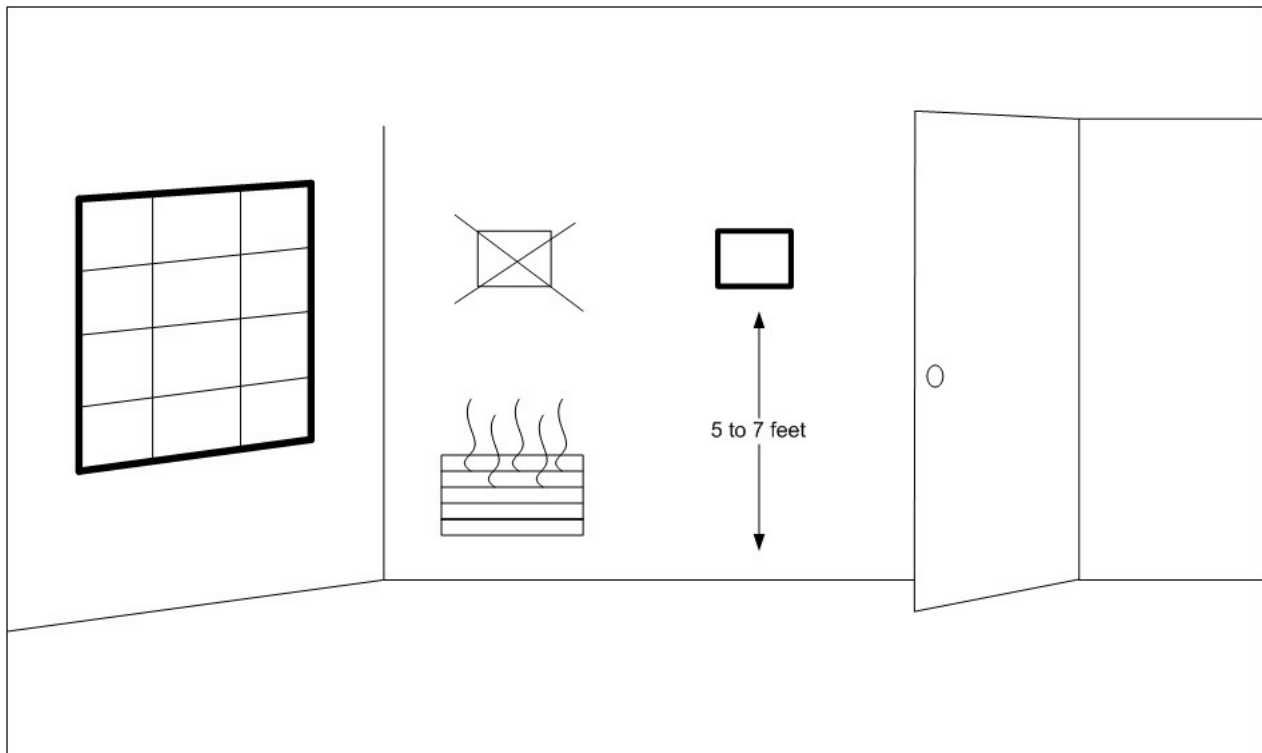
1. Installer must be a trained, experienced service technician familiar with the system this product will control.
2. Disconnect all power before beginning installation to prevent electrical shock or equipment damage.
3. Control voltage and current ratings must fall within the range outlined in “specifications.”
4. Verify that the relay load does not exceed 1 amp. Excessive load will damage the solid state switch.

Thermostat Placement:

Mount your thermostat vertically about 5 feet above the floor in an area that has good air circulation at average room temperature. Be sure to locate the thermostat where it will be exposed to lights that are normally on when the room is occupied.

Locate the thermostat away from:

- Outside walls and drafts
- Doors, windows, and direct sunlight
- Supply air ducts, radiators and convectors
- Appliances that produce heat or cool air



Warning: Do not use this thermostat on circuits exceeding 30 volts AC.

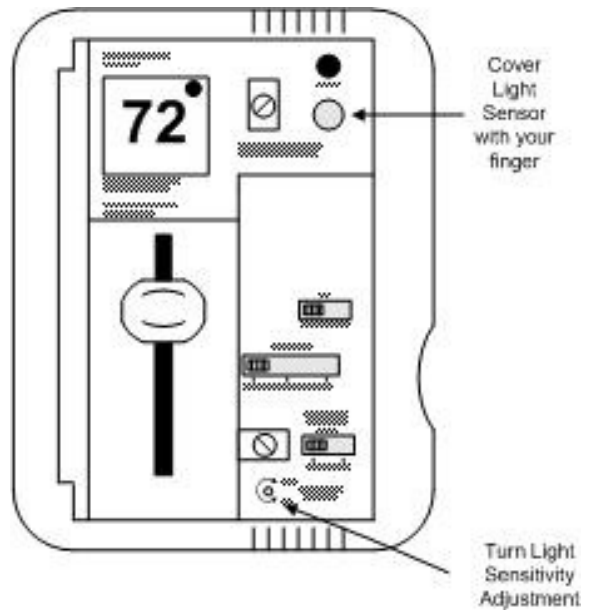
Installation:

1. Check the equipment ratings on the system this thermostat will control, to make sure the thermostat is appropriate for the application.
2. Check the system voltage and verify it is between 24 and 30 VAC.
3. Turn the sytem power OFF before you begin the installation procedure.
4. Note the color of the wires and the terminals they are connected to. Some thermostats may have to be removed from the wall to determine wiring connections.
5. Remove the old thermostat from the wall, making sure the wires do not fall back into the wall.
6. Make sure the thermostat switch is in the OFF position.
NOTE: TGHP thermostats may have power even while switch is in the OFF position. (if the display can be read with the switch in the off position, the thermostat has power)
7. Set DIP switches (see page 7).
8. Attach the wires as shown in the model specific wiring diagrams (see page 6).
9. Attach the thermostat to the wall using the hardware supplied. Note: The thermostat does not have to be level in order to operate properly, but it should be level for good appearance.
10. Turn the system power ON and the thermostat switch to the ON position as desired.

Note: Your Lightstat may come from the factory with fixed light sensitivity. This means that under normal lighting, the thermostat will heat/cool your space to the comfort slide setting. Under low light conditions, the thermostat will set the temperature back. A green setback light turns ON, indicating the thermostat is in the Setback mode.

Adjusting (optional) light sensor:

1. Open the thermostat cover and locate the green setback light at the upper right of the thermostat and the light sensor below it.
2. Cover the light sensor with your finger. The green setback light should turn ON after 3 seconds, indicating the thermostat is in Setback mode. Remove your finger and the green light should turn OFF indicating the thermostat is in Day mode.
3. The Light Sensitivity knob located at the lower right of the thermostat controls the amount of light necessary to keep the thermostat in the Day mode.
4. Turn the knob full clockwise (towards bright) to put the thermostat in the Setback mode. The green light should be on after 3 seconds.
5. Now slowly turn the knob counterclockwise (towards dim) until the green setback light just goes out.
6. Close the thermostat cover. Cover the light sensor and verify the green light turns on. Remove the covering over the sensor and verify the green setback light turns off. If it does not turn off, slightly adjust the light sensitivity knob clockwise and re-verify operation. Your thermostat is now adjusted to your current light level.



Adjusting (optional) night setback setting:

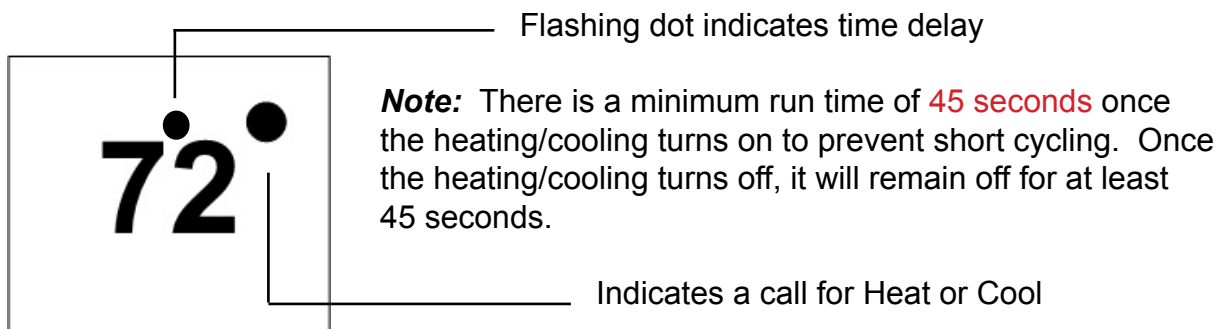
Your Lightstat may come from the factory with a fixed night setback. That means when your Lightstat thermostat is in the Setback mode, it will automatically set the heating/cooling back a predetermined number of degrees from the comfort slide setting. If your model has setback options, there will be a night setback switch on the back or in the lower right hand corner of the thermostat. Choosing less setback may be more comfortable, but will offer less energy conservation and savings. See page 11 for more detail on DIP switch settings and setback features.

Note: When the green setback light goes on, the display will briefly flash showing the night setback temperature. When the green setback light turns off, the display will flash showing the comfort slide setting temperature.

Some thermostats may be equipped with a “slide sensitive” setback. (refer to model specific features to know if your thermostat has this functionality). If the temperature slide is not moved for an amount of time specified by the customer (and preprogrammed at the factory), then the thermostat is in setback. To bring the thermostat out of setback, simply move the temperature slide.

Note: Typically, moving the temperature slide will show the current thermostat setpoint. For slide sensitive setback models, the setback setpoint cannot be viewed on the display because touching the slide will bring the thermostat out of setback.

Adjusting the temperature setting:



Note: Any time the comfort slide is moved, the display will illuminate and the flashing number indicates the current setpoint temperature.

1. Make sure the system power is ON.
2. Move the thermostat power switch to the ON position.
3. Adjust the comfort slide either up or down until the flashing number reaches the desired setting.
4. Once you have stopped moving the comfort slide the display will change from a flashing display to a steady display. A steady display indicates actual room temperature.
5. A steady dot in the upper right corner of the display will indicate if heating/cooling system is ON.

Basic Operation:

- Steady temperature display indicates actual room temperature.
- Set temperature with comfort slide.
- Display will illuminate briefly when temperature slide is moved.
- Flashing display indicates comfort slide setting.
- Solid dot in upper right corner of display indicates a call for heat or cool.
- Flashing dot in middle of display indicates that a time delay is in effect.
- Temperature range and setbacks are programmed at the factory.
- Night setback is automatic when there is a drop in the room light level.
- Setback mode is indicated by a green light.

Check the inside cover for your model's temperature range and setback.

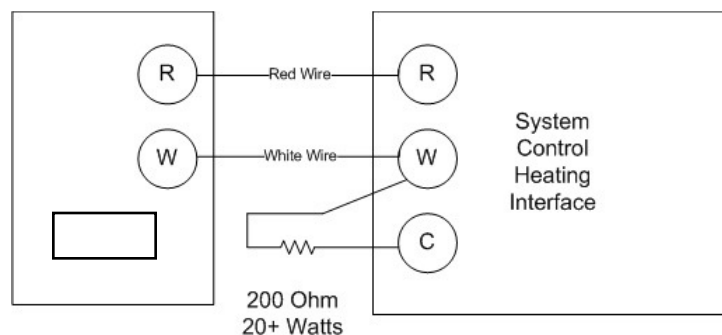
Application Notes:

When connecting the TG series (power robbing) thermostats to a furnace control board or electronic ignition model, one of (3) potential issues may occur.

1. When not calling for heat, the furnace falsely starts its heating cycle.
2. When calling for heat, the furnace is "chattering" or does not complete its heat cycle.
3. The display goes blank at times.

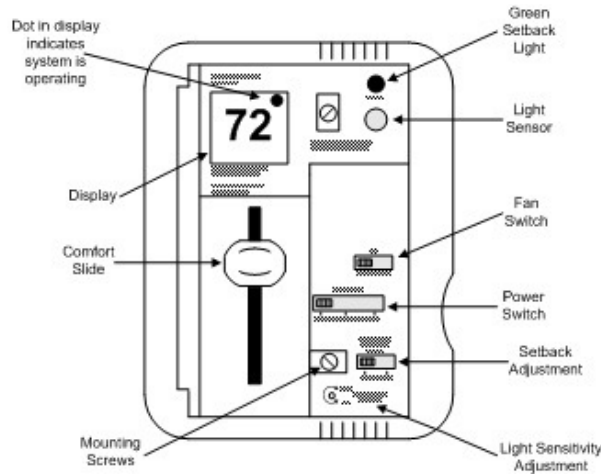
If the installation exhibits any of these issues, we recommend that you add a 200 ohm (minimum 20 watt) resistor from any output terminal to the C (common) terminal at the front of the furnace control board, ignition module, or zone control valve.

Below is a wiring diagram showing a resistor placed from the W (heating) terminal to C (Common). Other terminals may be used.



It is recommended that the resistor be mounted so that it is not touching anything and that there is adequate ventilation around it as it will normally get warm. A 200 Ohm, 20 Watt resistor is included with a metal lead from one end and a white wire whip from the other to allow flexibility during installation. The resistor has no polarity.

Thermostat Layout



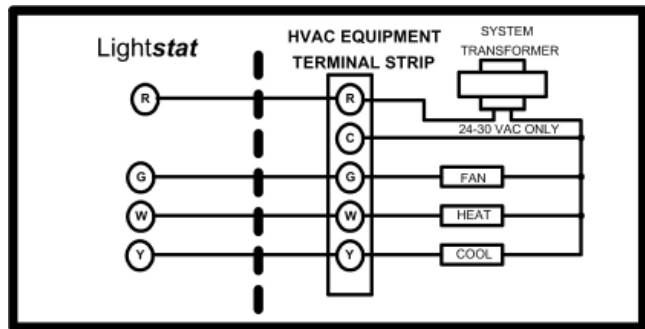
TGHC Heating/Cooling Thermostat Specifications:

The TGHC is a single stage heat/cool thermostat.

This thermostat cannot be used on:

1. Millivolt systems (self generating systems that do not have a transformer or relay).
2. Two transformer systems using RC and RH wires.
3. Heat pump systems.
4. Line voltage (120 VAC) systems directly.

TGHC Wiring Diagram



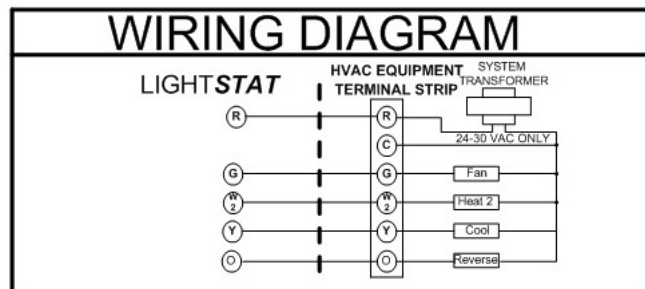
TGHP Heat Pump Thermostat Specifications:

The TGHP is a single stage heat/cool thermostat for heat pump applications.

This thermostat cannot be used on:

1. Millivolt systems (self generating systems that do not have a transformer or relay).
2. Two transformer systems using RC and RH wires.
3. DC voltage systems.
4. Line voltage (120 VAC) systems directly.

TGHP Wiring Diagram



Warning:

Never connect a common or neutral wire to the Lightstat. This will cause damage to the Lightstat.

Setting the DIP switches:

Your thermostat may have up to (7) configurable DIP switches depending on the features specified for your application. DIP switches may be configured in accordance with the following table.

For TGHC Models, switch positions 1 through 5 should be set. Positions 6 and 7 have no function.

Position	Off (left position)	On (right position)
1	Fahrenheit	Celsius
2	45 Second Lockon/lockoff Timers Active	45 Second Lockon/lockoff Timers Inactive
3	Lesser setback number	Greater setback number
4	Fan controlled by thermostat in heat mode.	Fan controlled by external device in heat mode.
5	Fan locked in auto when in setback.	Fan on allowed when in set- back.
6	No function on TGHC	No Function on TGHC
7	No Fucntion on TGHC	No Function on TGHC

For TGHP Models, all switch positions (1 through 7) should be set accordingly.

Position	Off (left position)	On (right position)
1	G & Y remain energized w/ Call for W2	No G or Y with a Call for W2
2	45 Second Lockon/lockoff Timers Active	45 Second Lockon/lockoff Timers Inactive
3	Lesser setback number	Greater setback number
4	Fan controlled by thermostat in heat mode.	Fan controlled by external device in heat mode.
5	Fan locked in auto when in setback.	Fan on allowed when in set- back.
6	Backup Heat Operating Differential 1.5 ° F (0.8 ° C)	Backup Heat Operating Differential 3.0 ° F (1.7 ° C)
7	O output with cool	O output with heat

Note: If any DIP switch is changed during operation, the thermostat will reset and the new dipswitch setting(s) will be read.

Troubleshooting your Lightstat thermostat:

PROBLEM	POSSIBLE CAUSE	SOLUTION
The digital display does not light up.	1. No power to the stat or system equipment. 2. Lightstat switch in OFF position.	1. Check the system low voltage power. 2. Check the system ON/OFF switch. 3. Check the circuit breaker.
The display works but the heat does not come on.	The room temperature is above the factory programmed limit of the thermostat.	Check again when the room temperature falls below the factory programmed limit.
The display works but the cooling does not come on. (some stats are heating only and this would not apply).	The room temperature is below the factory programmed limit of the thermostat.	Check again when the room temperature goes above the factory programmed limit.
Setback indicator stays ON or OFF.	1. Improper light sensor adjustment. 2. Thermostat location is not optimal.	1. Adjust light sensor (optional) 2. Move thermostat if necessary. Review locations to avoid (page 2).
Fan runs continuously with thermostat system switch set to OFF.	Fan switch set to the ON position.	Move fan switch to the AUTO/OFF position.
Control relay on heating unit chatters.	Low voltage	



Lightstat Limited Lifetime Warranty

Lightstat Inc. warrants that all Hardware Products (Products) sold by it after October 1, 2015 are free of defects in material and workmanship, under normal use and service for as long as the Products are installed in their original installation for the original End User and operator of the Products with the following limitations:

1. In the event of Product discontinuance, warranty support is limited to five (5) years from the announcement of discontinuance.
2. The duration of the warranty period for Products not designed or manufactured by **Lightstat** (e.g. power supplies, Ethernet cables, motion sensors, etc) and mechanical assemblies that are subject to normal wear and tear (e.g. timers, electrical contactors, relays) shall be two (2) years from the time of purchase.
3. This warranty does not apply to any Product which was not operated in accordance with the printed instructions, has been damaged by accident or acts of God or which has been misused, abused or neglected or has been damaged by other cause. This warranty also does not apply to any Product, which was maintained, altered or repaired by anyone other than **Lightstat** or its authorized representatives.
4. This warranty is conditioned upon (a) proper storage, installation, use and maintenance and conformance with any applicable recommendations of **Lightstat** and (b) Customer promptly notifying **Lightstat** of any defects and, if required, promptly making the Product available for correction.

All claims for nonconforming or defective Products must be made within the warranty period. Any claim not made within that period shall be deemed waived and released. **Lightstat's** sole responsibility with respect to such claims shall be, at its option, to repair or replace any Product or component that it determines to be defective. Replaced Products may be refurbished or new equipment at the option of **Lightstat**. Such Product must be removed by the installer and returned to the factory within the applicable warranty period with transportation charges, if any, prepaid, after first obtaining proper authorization and shipping instructions by contacting **Lightstat**. Any repaired or replacement Product shall be warranted for the remaining period of the original Warranty Period. Repair or replacement as provided under this warranty shall be the exclusive remedy of the Customer.

In no event, shall **Lightstat** be responsible for any monetary damage or be liable for any incidental or consequential damages due to any cause whatsoever, including, without limitation, commercial loss or damage resulting from an alleged defect in the Product.

Lightstat does not authorize any other person or organization to assume for it any liability in connection with this Product and any statements or representations made by any other person or organization are void.

EXCEPT FOR THOSE WARRANTIES EXPRESSLY SET FORTH IN THIS AGREEMENT, LIGHTSTAT INC. DISCLAIMS ANY AND ALL OTHER WARRANTIES, EXPRESS IMPLIED, STATUTORY, OR OTHERWISE INCLUDING, BUT NOT LIMITED TO, ALL WARRANTIES OF FITNESS FOR A PARTICULAR PURPOSE OR MERCHANTABILITY. LIGHTSTAT INC. MAKES NO ADDITIONAL EXPRESS OR IMPLIED WARRANTIES EXCEPT TO THE EXTENT, IF ANY, THEY ARE SPECIFICALLY REQUIRED BY LAW.

Some states do not allow the exclusion or limitation of implied warranties or consequential damages, so the above limitations or exclusions may not apply to the purchase of this Product. This warranty gives each original purchaser specific legal rights, and such purchaser may have other rights that vary from state to state.

Lightstat Inc. • 22 W. West Hill Road • Barkhamsted, CT 06063 • USA • 800.292.2444
sales@lightstat.com • www.lightstat.com • © 2015 Lightstat Inc. All Rights Reserved. Made in USA.

WARRANTY 10115v1.1